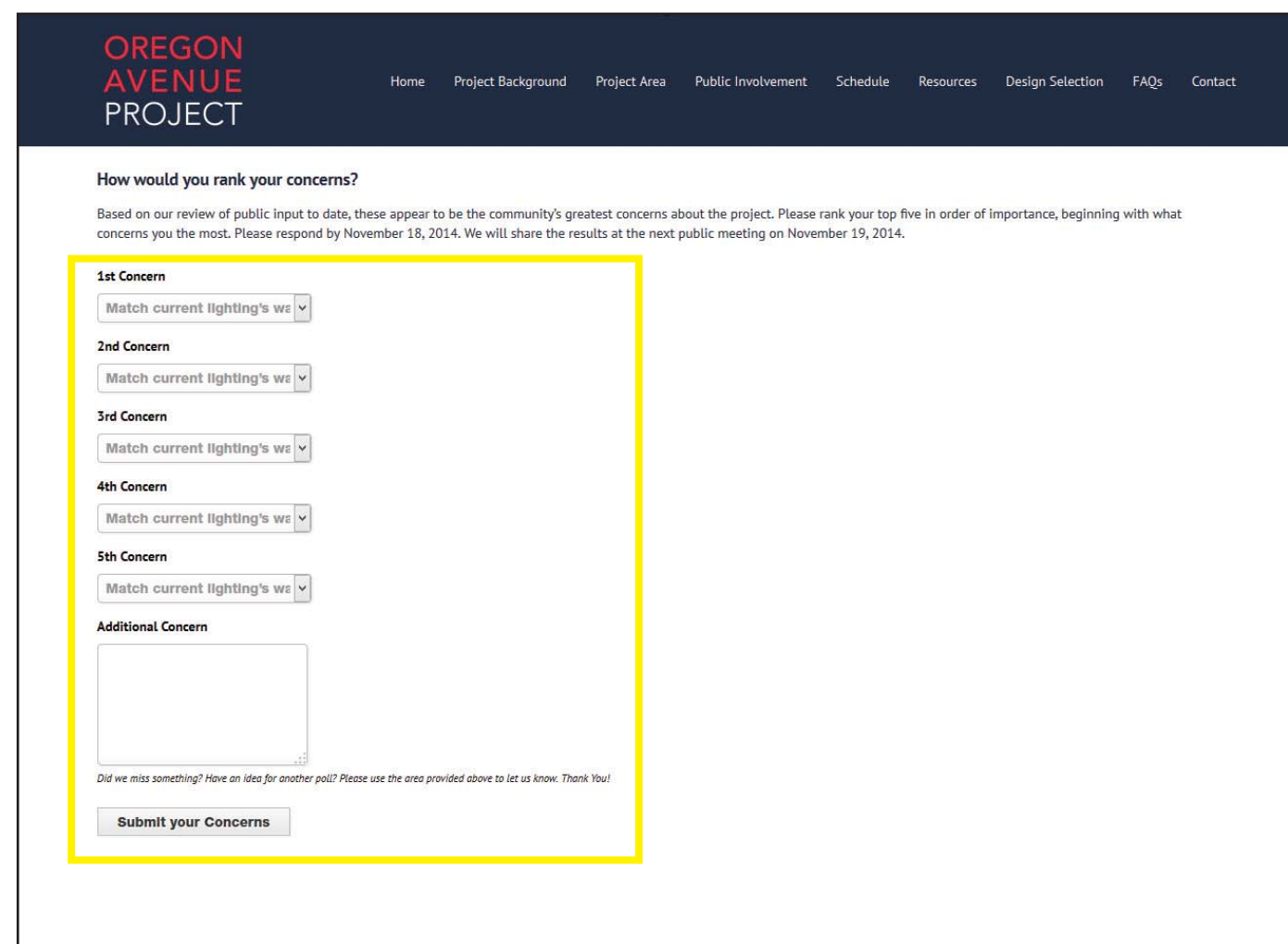
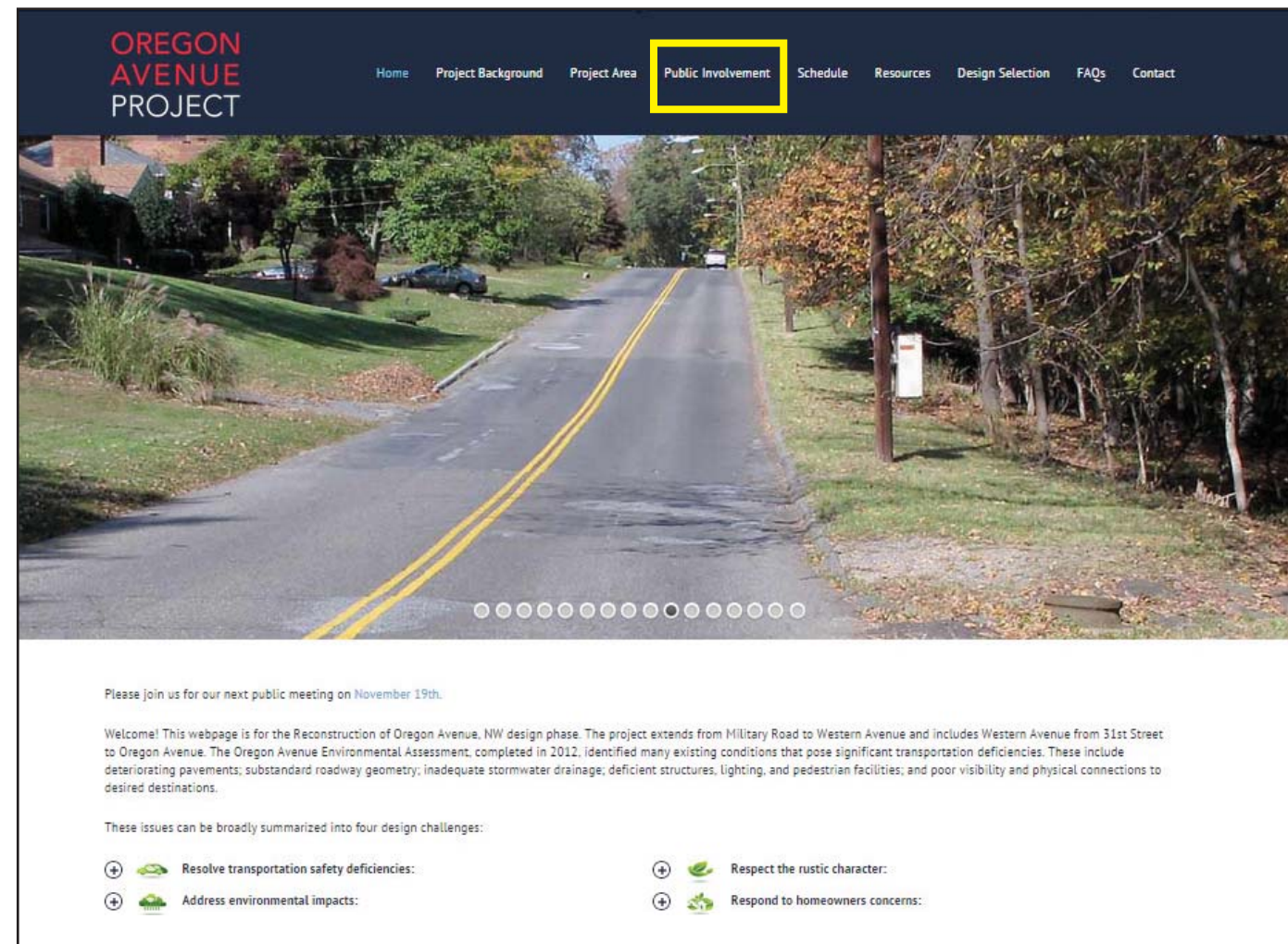
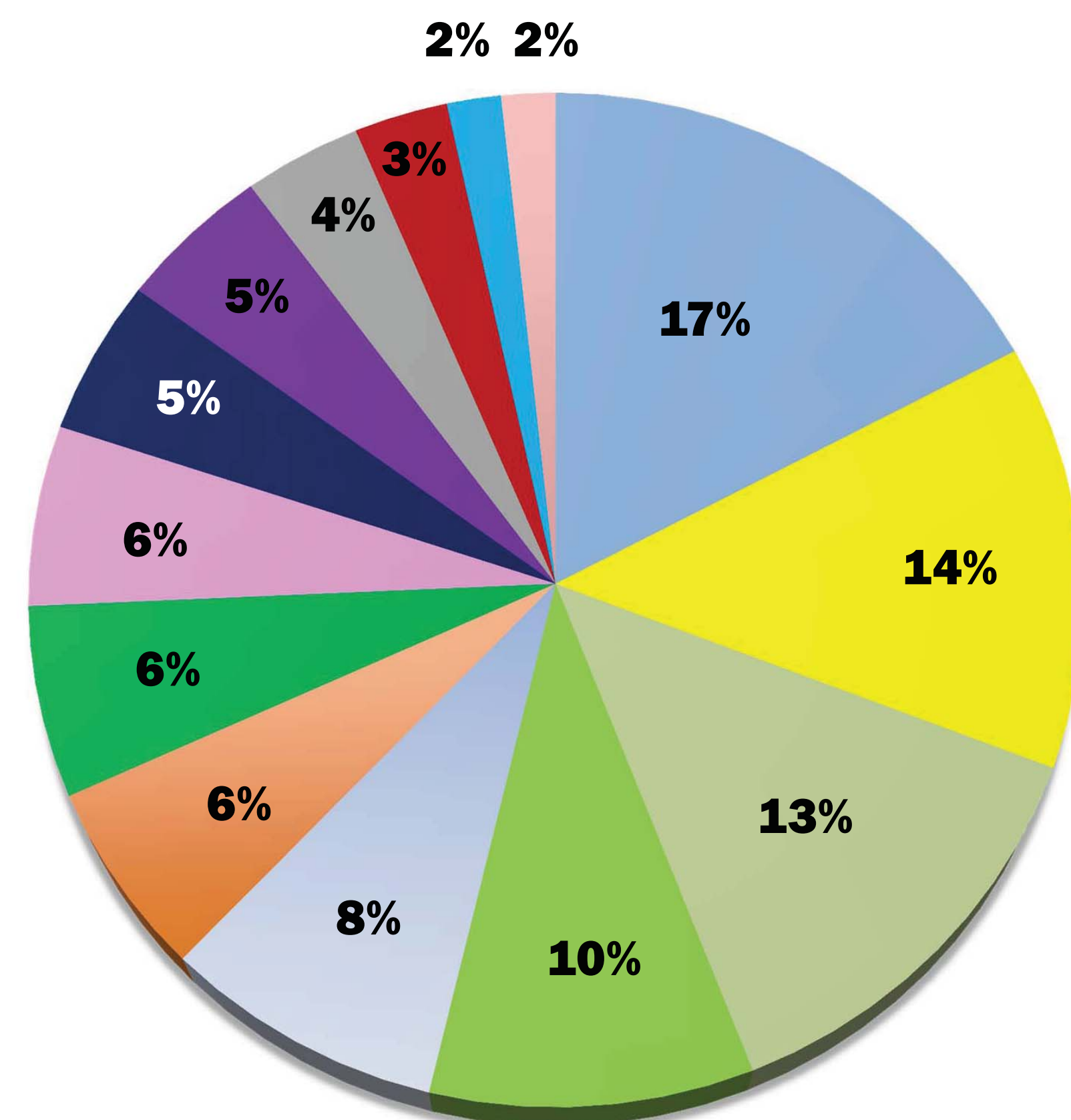


RESULTS OF PROJECT POLL



Community Concerns	By Number of Votes					Total Votes
	1st Concern	2nd Concern	3rd Concern	4th Concern	5th Concern	
1 Sidewalks maintain rustic character	11	5	10	1	4	30
2 Match current lighting's warmth	2	2	7	6	11	26
3 Preserve as many trees as possible	3	10	8	3	2	25
4 Sidewalks improve pedestrian & bike safety	13	3	2	1	0	18
5 Keep roadway its existing size	2	6	2	5	4	18
6 Avoid retaining walls	2	2	4	3	3	13
7 Input from community for plan	0	1	2	5	4	12
8 Reduce traffic speed	1	2	3	5	0	11
9 Address erosion issues	2	4	1	4	0	10
10 The impact to my front yard	6	1	1	1	0	9
11 Manage stormwater	2	3	1	3	0	8
12 Impact on property values	0	1	0	2	3	6
13 Better connection to Rock Creek Park	0	2	3	1	0	5
14 Bridge & retaining wall aesthetics	0	2	0	1	1	4
15 More maintenance for homeowners	0	0	0	0	0	0

Community Concerns	By Point Value - # votes x # points					Total Points	%
	x 10 points	8 points	x 6 points	x 4 points	x 2 points		
1 Sidewalks maintain rustic character	110	40	60	4	8	222	17%
2 Preserve as many trees as possible	30	80	48	12	4	174	14%
3 Sidewalks improve pedestrian & bike safety	130	24	12	4	0	170	13%
4 Match current lighting's warmth	20	16	42	24	22	124	10%
5 Keep roadway its existing size	20	48	12	20	8	108	8%
6 The impact to my front yard	60	8	6	4	0	78	6%
7 Avoid retaining walls	20	16	24	12	6	78	6%
8 Address erosion issues	20	32	6	16	0	74	6%
9 Reduce traffic speed	10	16	18	20	0	64	5%
10 Manage stormwater	20	24	6	12	0	62	5%
11 Input from community for plan	0	8	12	20	8	48	4%
12 Better connection to Rock Creek Park	0	16	18	4	0	38	3%
13 Impact on property values	0	8	0	8	6	22	2%
14 Bridge & retaining wall aesthetics	0	16	0	4	2	22	2%
15 More maintenance for homeowners	0	0	0	0	0	0	0%



Pie chart based on a point system given for each role

1st concern = 10 points
 2nd concern = 8 points
 3rd concern = 6 points
 4th concern = 4 points
 5th concern = 2 points

ADDITIONAL CONCERNS

Participants were given an option to provide additional concerns not provided as one of the fifteen options. Shown below are all additional concerns submitted in chronological order and unedited with the exception of personal names.

- “Keeping sidewalks 5-6’ in width”
- “I do not have property on Oregon Avenue, but I am in Oregon Knolls. You should respect people's property as best you can. As narrow, rustic sidewalks as possible. Keep Oregon rural”.
- “Traffic volume, pollution & noise”
- “Walk ways preferably less than 4 ft wide”.
- “Context-sensitive curbing”
- “Maintain the rustic character of the neighborhood. Do NOT make it easier to use Oregon as a commuter artery. Do NOT put in new sidewalks. Expanding the roadway or making it more conducive to vehicular traffic will only worsen congestion in the long run. You wouldn't address obesity by loosening your belt, would you? (Also, use our tax dollars to help District residents in need, not on projects that will mainly benefit wealthy suburbanites, many of them in Maryland. Thank you”.
- “An additional concern is that the sidewalk naysayers will win because we're having so, so so many public meetings on this. This has been going on for years! Can we just please get sidewalks already???”
- “Speed and volume of St. John's traffic either reduced or systematically dropped from a new Military Ave drop off point”.
- “Not over-reaching with this project”
- “Oregon Avenue is unsafe for pedestrians and those in the neighborhood. There needs to be sidewalks and crosswalks so that people can walk safely along the street and can cross the street – especially given how fast people speed on Oregon!”
- “Please get input from the community and preserve the rustic character of Oregon ave. including retaining all of the trees. We live here on Oregon because we like the country feel and do not want that destroyed. Thank you”.
- “My concern is that the group of 250 citizens that have joined together.....are being given too much of the lead on a project that impacts all 14000 residents of Chevy Chase DC. I am tired of the "not in my front yard" group, fix the road now!”
- “Sidewalks that are right next to the curb are not safe or aesthetic. In most sections, the sidewalk should be separated from the curb by 5' minimum and in many places it should be 10' or more if topography allows it. Asphalt hiker biker trail is best choice”.
- “No restrictions on on-street parking in the 5800 block, other than snow route; narrowest possible sidewalks - not 5 feet!”
- “Do not straighten out hills and curves”.
- “Safe but narrow walking paths - not wider than necessary”
- “No brick or concrete sidewalks; no wide sidewalks; no concrete street pavement - maintain asphalt; no brick pavement in parking spaces in the 5800 block - parking area should be an extension of the asphalt street like on Nebraska Ave”
- “No parking restrictions on 5800 block - 24 hour parking except when called for as a snow route”
- “Prefer repair of problem sites, adding curbs and resurfacing – no expensive major, long term construction or renovation”.
- “We have to retain 24 hour parking on the 5800 block of Oregon Ave, narrow as possible sidewalks (not 5 feet wide), and no use of brick or concrete for sidewalks or pavement”.

